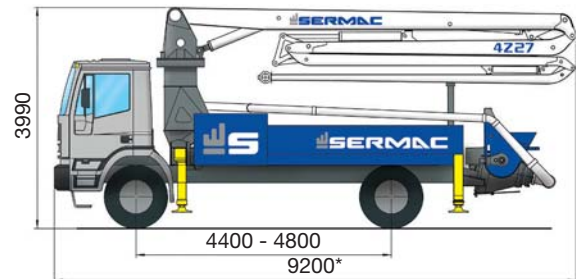




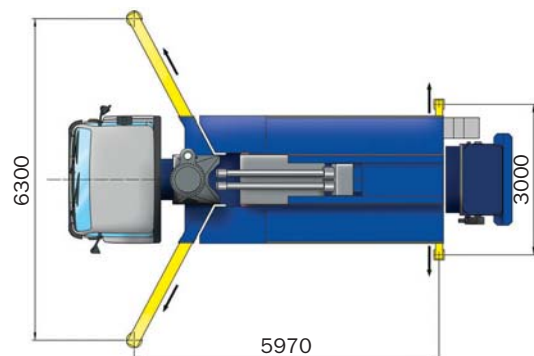
## ADVANTAGES

- Concrete pump produced, assembled and tested in SERMAC.
- Structural verification with the Finite Element Method (FEM).
- Frame pump designed for high torsion rigidity.
- Precise assembly on 2 axles chassis.
- High precision and great versatility of boom 4 sections, folding type "Z".
- Pipeline diameter 125 mm (5").
- Main Italian and German genuine components.
- Pumping unit whit open hydraulic circuit with concrete S-valve made of iron casting.
- Easy placement in tight spaces.



## PUMPING UNIT - S8

MODEL	AS8M08 80-80	AS8M09 100-61	AS8L09 130-61
THEORETICAL OUTPUT (MAX)* ROD SIDE	80 m <sup>3</sup> /h (104 yd <sup>3</sup> /h)	100 m <sup>3</sup> /h (130 yd <sup>3</sup> /h)	130 m <sup>3</sup> /h (170 cy/h)
PRESSURE ON CONCRETE (MAX)* ROD SIDE	80 bar (1160 psi)	61 bar (884 psi)	61 bar (884 psi)
NUMBERS OF CYCLES	27 /min	25 /min	27 /min
PISTONS DIAMETER	230 mm		
CONCRETE CYLINDERS	1600 mm	2000 mm	
S-VALVE DIMENSION	8"		
CONCRETE HOPPER CAPACITY	600 l		



\*Cannot be reached simultaneously

\*Dimensions variable according to the truck assembly